

Micro-adventure

presented par



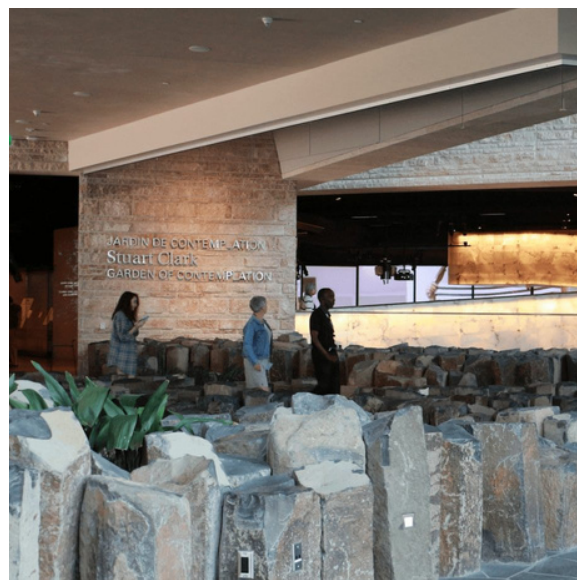
SALUT
CANADA



Manitoba

Stop

1



[Canadian Museum for Human Rights](#)

This museum, which is located in Winnipeg, has adopted a universal approach to underscore the importance of human rights and was the first one to examine human rights from a general perspective in Canada and across the world. It is home to temporary exhibits and permanent galleries that tell various stories on this very topic.

Stop

2



[Esplanade Riel](#)

The Esplanade Riel footbridge spans the Red River and links Winnipeg to the Francophone quarter of St. Boniface. Étienne Gaboury, a Franco-Manitoban architect of international renown, designed this elegant bridge, which is the only one in the world to have a restaurant right at its midpoint.

Stop

3

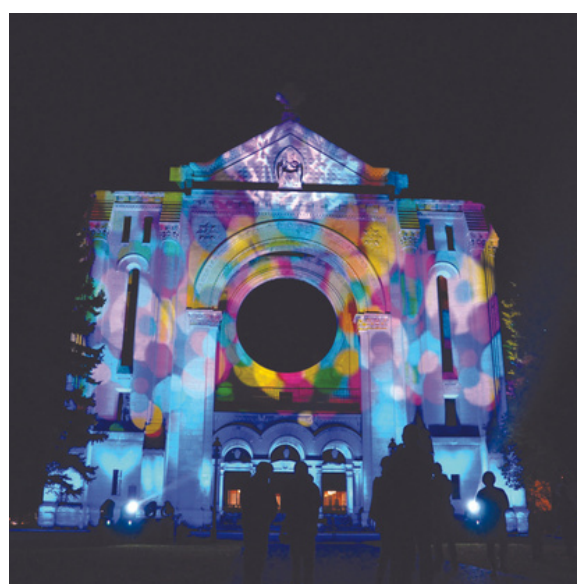


[Musée de Saint-Boniface](#)

The Musée de Saint-Boniface enables visitors to discover the culture of the Métis people of Red River and the role of French-Canadians in populating and developing Manitoba. The museum houses the most significant collection of items belonging to Louis Riel. The building alone is worth the trip.

Stop

4



[Cathedrals of St. Boniface](#)

Entering the St. Boniface cathedral today is a unique experience, having been built between the high stone walls of the previous cathedral, which survived the fire that ravaged it in 1968. Out front is one of the oldest and most significant Catholic cemeteries in Western Canada.

Stop

5

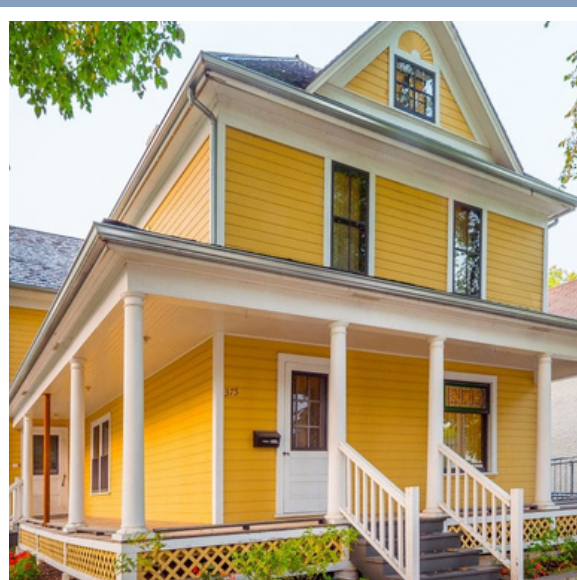


[Maison des artistes](#)

The Maison des artistes visuels Francophones in St. Boniface is a centre for artists involved in present-day art working with the Francophone community in Manitoba. It has developed several activities and strategies to ensure that works that are released, regardless of discipline, reach a wide audience and promote Francophone artists.

Stop

6



[Maison Gabrielle Roy](#)

The Corporation de la Maison Gabrielle-Roy purchased the birthplace of Manitoban artist Gabrielle Roy. The objective was to restore the house and open it to the general public, as it represents a very important and recurrent symbol in the work of this notorious French-Canadian author. Visit as a family or as a part of a school group, and delve into a universe that is depicted by realism and sensitivity.

[Show route on Google Maps!](#)